

PHONIC

ACOUSTIC CEILING TILES

PHONIC SILENCE CLOUD

Sound Panel



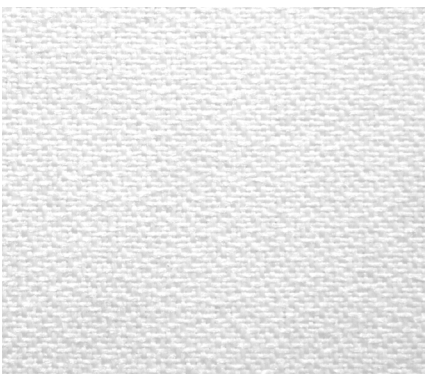
High Absorption



Fire Test- Group 1S



Glasswool



PRODUCT SUMMARY


Phonic Silence Cloud Sound Panel is a 40mm fabric wrapped glasswool acoustic ceiling or wall panel.

- Exceptionally high acoustic properties.
- Mid-range priced panel suitable for cafes, restaurants, offices, boardrooms, classrooms, cafes and as a retrofit solution to reduce reverberation time in most commercial and education spaces.
- Suitable to use below an existing ceiling and as wall panels.
- An architecturally attractive and acoustically effective design solution.
- Digital customisation option – print your own creative graphics onto the panel.
- Easy installation.
- Prefabricated.

EMISSIONS, SUSTAINABILITY AND THE ENVIRONMENT

For Green Star rated projects, Phonic meets the Greenguard Emission Certificate standard.



GENERAL TEST DESCRIPTION	RESULT	TEST METHOD
Absorption (ISO 354)	NRC 0.90	ASTM C432
(with no air gap)	α_w 0.90	ISO 11654
	SAA 1.05	ASTM C423
Light Reflectance	LR 87% + (white panel only)	
Weight	4.8kg/m ²	
Density	120kg/m ³	
Fire Test - ISO 5660 Part 1		
Blank Panel	Group 1-S	ISO 5660 Part 1
Standard Fabric	Group 2-S 	
Size	40mm Depth x [2200x1200], [1200x600] Other sizes available on request. MOQ applies.	
Colour	White (other colours can be colour matched).	
Installation		
Direct Fix	Adhere brackets to wall by mechanical fixing and manoeuvre panel on to the fixing brackets.	
Ceiling Suspension	Suspend from the ceiling using wires and cable locks, or use magnets to adhere directly to the structure.	
Light Fitting	Holes may be cut to allow lighting to be suspended through panels.	

INGREDIENTS

Fibreglass tissue face with acrylic resin (back and front of tile) 7-10% - Fibreglass (Glasswool) 80-85%, Acrylic resin 15-20%, **Acoustic board 70-80%** - Glasswool 88-89%, Phenolic resin 11-12%, **Water-based paint 20-25%** - Acrylic emulsion 10-15%, Inorganic filler (Kaolin, Calcium carbonate) 40-55%, Environmentally friendly flame retardant 15-25%, A variety of additives (Dispersant, Leveling agent; from Polycarboxylate ammonium salt, EGBE-Ethylene glycol monobutyl ether, Water) 3-5%, Ion water 15-20%, **Glue 2-4%** - Acrylic resin 50-55%, Ion water 45-50%.